

Weather Summary for V. C. Bird International Airport, Coolidge, Antigua March 2010

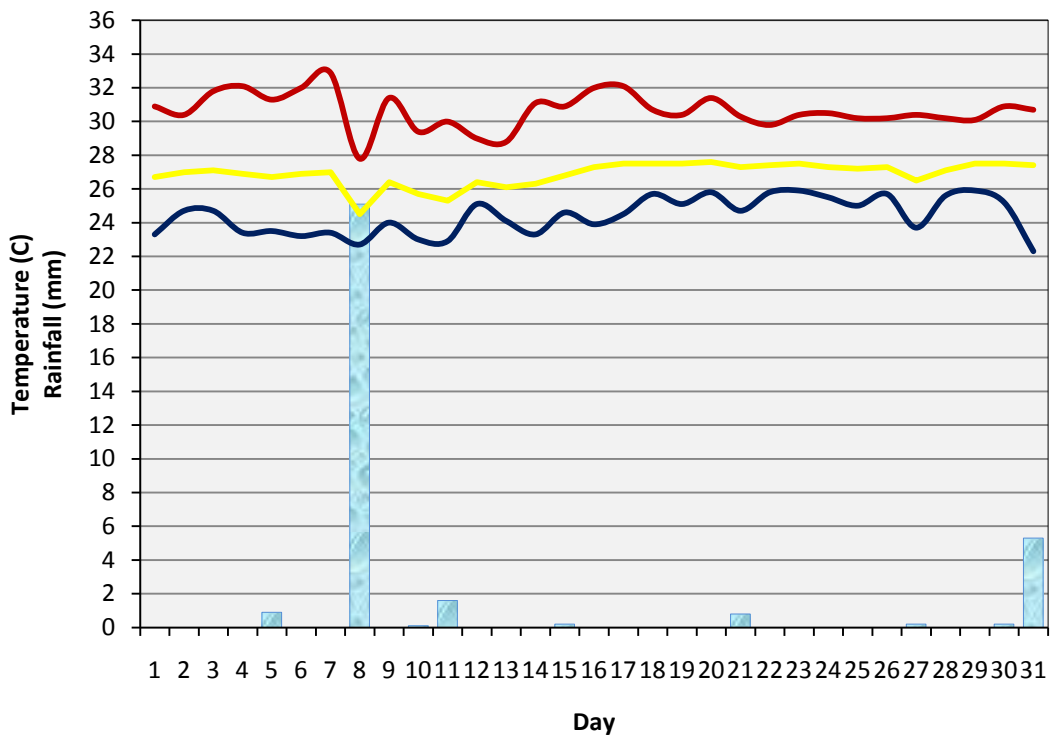
Dale C. S. Destin
Antigua and Barbuda Meteorological Service
April 27, 2010

Coolidge experienced near normal rainfall during March. The total for the month was 1.35 inches as compared to the normal figure of 1.87 inches (1971 – 2000). The rainfall total for this month was 72% of the normal total. Although the rainfall was near normal, the number of rainy days, 3, was well below normal. Most of the rain (73%) fell in one day, with the maximum 1-day rainfall of 25.1 mm or 0.99 of an inch occurring on March 8 as a result of a cold front. Cold fronts contributed most to the rainfall total for the month.

The mean temperature was well above normal and the highest on record for March (1971 – 2010). The mean temperature was 26.9°C as compared to the normal of 25.4°C (1971 – 2000). The maximum temperature, 32.9°C, was well above normal and the highest ever for the month (1971 – 2010). The second highest maximum for this month is 32.4°C recorded in 1987. Meanwhile, the minimum temperature, 22.3°C, was well above normal and the highest on record for the month.

The mean wind speed was well below normal and the lowest since 1981 and the second lowest ever for the month (1971 – 2010). The mean wind speed was 9.0 knots as compared to the normal of 12.2 knots. The lowest wind speed for this month is 8.4 knots recorded in 1981.

Graph 1: March 2010 Met Elements at V. C. Bird Int'l Airport, Coolidge



| SUMMARY FOR V.C. BIRD INT'L AIRPORT, COOLIDGE – MARCH 2010 | | | | | |
|--|----------------|--------|--------------|------|--------------|
| ELEMENT | OBSERVED VALUE | DATE | RECORD VALUE | YEAR | NORMAL AVG |
| <u>TEMPERATURE</u> | | | | | |
| ABSOLUTE MAXIMUM | 32.9°C | MAR 7 | 32.9°C | 2010 | 30.1°C |
| MEAN DAILY MAXIMUM | 30.6°C | | 30.6°C | 2010 | 28.6°C |
| MEAN DAILY | 26.9°C | | | | 25.4°C |
| MEAN DAILY MINIMUM | 24.4°C | | 20.6°C | 1972 | 22.5°C |
| ABSOLUTE MINIMUM | 22.3°C | APR 1 | 17.0°C | 2000 | 19.5°C |
| WARMEST DAY(S) | 27.6°C | MAR 20 | | | 26.5°C |
| COOLEST DAY(S) | 24.5°C | MAR 8 | | | 24.5°C |
| DAYS MAX >= 31°C | 10 | | | | |
| DAYS MIN <= 22°C | 0 | | | | |
| MONTHLY RANGE | 10.6°C | | 13.8 | 1987 | 10.5°C |
| <u>RAINFALL</u> | | | | | |
| TOTAL | 54.4 MM | | 179.1 MM | 1985 | 44.5 MM |
| RAINIEST DAY ¹ | 25.1 MM | MAR 8 | 87.6 MM | 2002 | 19.2 MM |
| MEASURABLE RAINFALL DAYS | 9 | | | | 11.7 |
| DAYS >= 1.0 MM | 3 | | | | 7.4 |
| DAYS >= 10.0 MM | 1 | | | | 1.2 |
| DAYS >= 20.0 MM | 1 | | | | 0.4 |
| <u>HUMIDITY</u> | | | | | |
| MOST HUMID DAY(S) | 84.1% | MAR 10 | | | 82.5% |
| MAXIMUM | 94% | MAR 8 | | | |
| MEAN | 73.9% | | | | 73.1% |
| MINIMUM | 44% | MAR 7 | | | |
| LEAST HUMID DAY(S) | 66.1% | MAR 25 | | | 64.8% |

| <u>WIND</u> | | | | | |
|---|-------------|------------------|--|--|-----------|
| MAX SPEED & DIRECTION | 20 KT, E'N | MAR 19, 1510Z | | | |
| MAX GUST & DIRECTION | 27 KT, E'N | MAR 19, 1645Z | | | |
| MEAN | 9.1 KT | | | | 12.2 KT |
| PREVAILING SPEED & DIRECTION | 12.3 KT E'N | | | | |
| <u>PRESSURE</u> | | | | | |
| MAXIMUM | 1019.8 MB | MAR 21 | | | |
| MEAN | 1014.4 MB | | | | 1015.9 MB |
| MINIMUM | 1010.4 MB | MAR 7 | | | |
| <p>Table 2: Summary for V. C. Bird International Airport, Coolidge – March 2010. (All Times in Coordinated Universal Time (UTC/Z)). ¹Measured at 12:00 UTC daily. Normal – 1971 to 2000; AVG – 1995 to 2008. Records: temperature and rainiest – 1971 to 2010; Rainfall total 1928 – 2010.</p> | | | | | |

dale_destin@yahoo.com