

Weather Summary for V. C. Bird International Airport, Coolidge, Antigua June 2010

Dale C. S. Destin
Antigua and Barbuda Meteorological Service
July 9, 2010

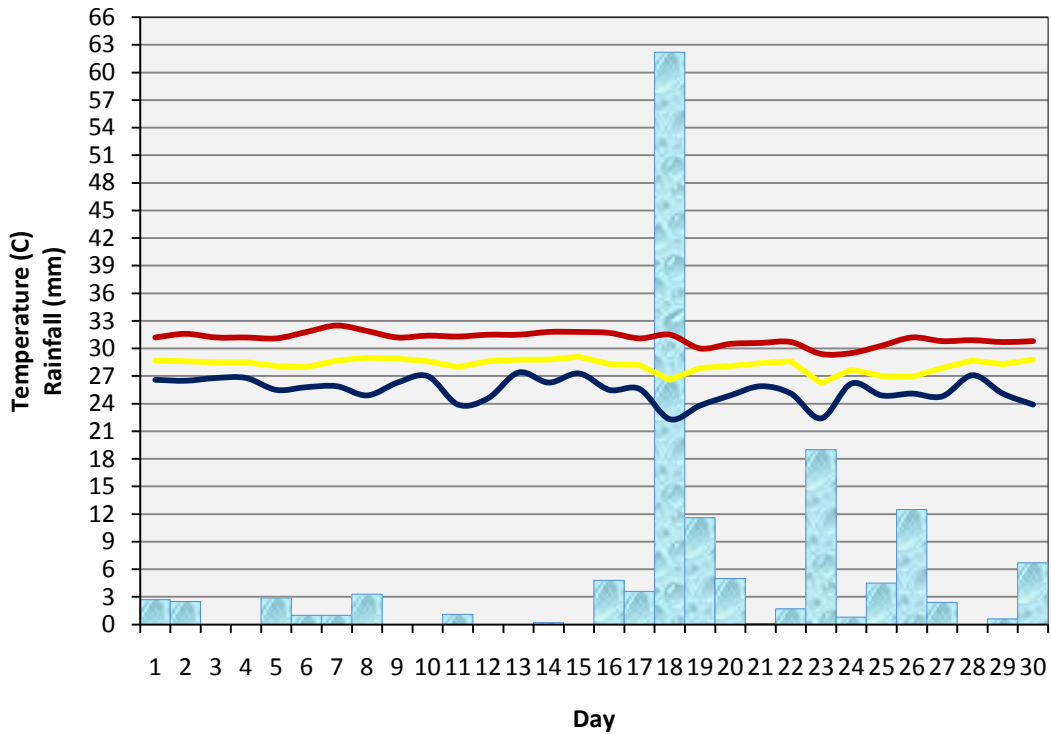
Coolidge experienced well above normal rainfall for the month of June. The rainfall for the month was 150.2 mm or 5.91 inches. The normal for the month is 1.81 inches (1971 – 2000). Also, the rainfall total for this month was 327% of the normal total. The number of rainy days was well above normal and the highest on record. The maximum 1-day rainfall of 62.2 mm or 2.45 inches occurred on June 18; this was caused strong tropical wave, and it is the second highest one-day total ever. The rains for the month were due mainly to tropical waves.

The mean temperature of 28.2°C was above normal, the highest since 2001 and the sixth highest on record for June. The normal temperature for the month is 27.8°C (1971 – 2000). The maximum temperature of 32.5°C was well above normal, the highest since 1998 and the fourth highest ever.

The mean wind speed of 10.7 knots was the lowest ever for the month (1971 – 2010). The mean wind speed for June is 13.5 knots (1971 – 2000).

SUMMARY FOR V.C. BIRD INT'L AIRPORT, COOLIDGE – JUNE 2010					
ELEMENT	OBSERVED VALUE	DATE	RECORD VALUE	YEAR	NORMAL AVG
<u>TEMPERATURE</u>					
ABSOLUTE MAXIMUM	32.5°C	JUN 7	32.9°C	'97, '98	31.6°C
MEAN DAILY MAXIMUM	31.1°C		31.9°C	1998	30.4°C
MEAN DAILY	28.2°C				27.8°C
MEAN DAILY MINIMUM	25.5°C		23.2°C	1974	25.3°C
ABSOLUTE MINIMUM	22.3°C	JUN 19	19.7°C	2003	22.8°C
WARMEST DAY(S)	29.1°C	JUN 15			28.8°C
COOLEST DAY(S)	26.2°C	JUN 23			26.5°C
DAYS MAX >= 31°C	19				
DAYS MIN <= 22°C	0				
MONTHLY RANGE	10.2°C		12.2	1997	11.7°C
<u>RAINFALL</u>					
TOTAL	150.2 MM		316.7 MM	1987	75.7 MM
RAINIEST DAY ¹	62.2 MM	JUN 18	65.6 MM	1989	23.1 MM
MEASURABLE RAINFALL DAYS	22				12.5
DAYS >= 1.0 MM	18				7.6
DAYS >= 10.0 MM	4				1.2
DAYS >= 20.0 MM	1				0.3
<u>HUMIDITY</u>					
MOST HUMID DAY(S)	86%	JUN 18,24,29			84.8%
MAXIMUM	95%	JUN 7, 11			
MEAN	76.3%				75.6%
MINIMUM	58%	JUN 18			
LEAST HUMID DAY(S)	63%	JUN 10, 14			68.7%
<u>WIND</u>					
MAX SPEED & DIRECTION	22 KT, ESE	JUN 24			
MAX GUST & DIRECTION	34 KT, ESE	JUN 24			
MEAN	10.7 KT				13.5 KT
PREVAILING SPEED & DIRECTION	12.1 KT E'N				
<u>PRESSURE</u>					
MAXIMUM	1018.4 MB	JUN 8			
MEAN	1015.7 MB				1015.6 MB
MINIMUM	1012.0 MB	JUN 19			
<p>Table 1: Summary for V. C. Bird International Airport, Coolidge – June 2010. The climatological day: 12Z to 12Z or 8 AM to 8 AM LST. ¹Measured at 12:00 UTC daily. Normal – 1971 to 2000; AVG – 1995 to 2008. Records: temperature and rainiest – 1971 to 2010; Rainfall total 1928 – 2010.</p>					

Graph 1: June 2010 Met Elements at V. C. Bird Int'l Airport, Coolidge



dale_destin@yahoo.com