

Weather Summary for V. C. Bird International Airport, Coolidge, Antigua January 2010

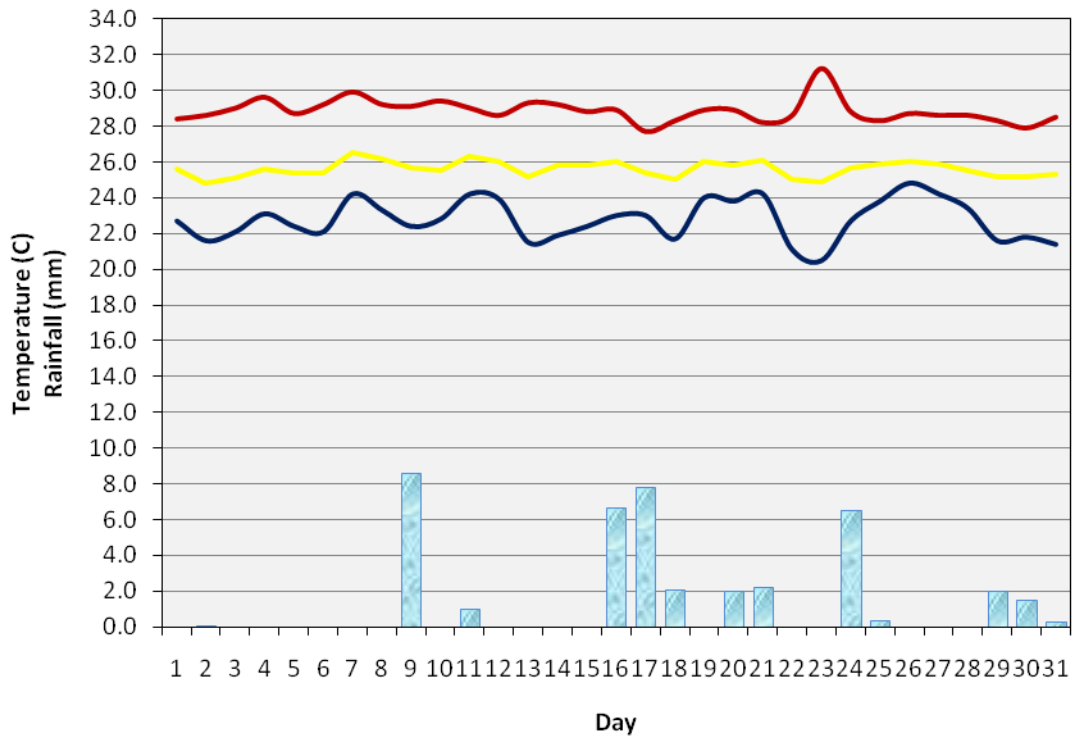
Dale C. S. Destin
Antigua and Barbuda Meteorological Service
February 15, 2010

Coolidge experienced below normal rainfall during January. The total for the month was 1.62 inches as compared to the normal figure of 2.30 inches (1971 – 2000). The rainfall total for this month was only 70% of the normal total. Although the rainfall was below normal, the number of rainy days, 10, was near normal. The maximum 1-day rainfall of 8.6 mm or 0.33 inches took place on January 9 as a result of a low level trough. Low level troughs and cold fronts contributed most to the rainfall total for January.

The mean temperature was above normal and the highest since 2003. The mean temperature was 25.6°C as compared to the normal of 25.2°C (1971 – 2000). The maximum temperature, 31.2°C, was well above normal and the highest ever (1971 – 2009). The second highest maximum for the month is 31°C in 1981. Meanwhile, the minimum temperature, 20.5°C, was above normal.

The mean wind speed was well below normal and the lowest ever (1971 – 2009). The mean wind speed was 8.3 knots as compared to the normal of 12.7 knots. The next lowest wind speed for the month is 8.6 knots in 1981.

Graph 1: January 2010 Met Elements at V. C. Bird Int'l Airport, Coolidge



SUMMARY FOR V.C. BIRD INT'L AIRPORT, COOLIDGE – JANUARY 2010					
ELEMENT	OBSERVED VALUE	DATE	RECORD VALUE	YEAR	NORMAL AVG
<u>TEMPERATURE</u>					
ABSOLUTE MAXIMUM	31.2°C	JAN 23	31.2°C	2010	29.3°C
MEAN DAILY MAXIMUM	28.9°C		29.3°C	1981	28.1°C
MEAN DAILY	25.6°C				25.2°C
MEAN DAILY MINIMUM	22.8°C		20.9°C	1976	22.2°C
ABSOLUTE MINIMUM	20.5°C	JAN 24	15.5°C	1992	19.1°C
WARMEST DAY(S)	26.5°C	JAN 7			26.3°C
COOLEST DAY(S)	24.8°C	JAN 2			23.9°C
DAYS MAX \geq 31°C	1				
DAYS MIN \leq 22°C	9				
MONTHLY RANGE	10.7°C		14.5	1992	10.5°C
<u>RAINFALL</u>					
TOTAL	41.2 MM		205.7 MM	1937	58.4 MM
RAINIEST DAY ¹	8.6 MM	JAN 9	53.6 MM	1998	18.0 MM
MEASURABLE RAINFALL DAYS	13				16.6
DAYS \geq 1.0 MM	10				11.3
DAYS \geq 10.0 MM	0				1.3
DAYS \geq 20.0 MM	0				0.3
<u>HUMIDITY</u>					
MOST HUMID DAY(S)	82.4%	JAN 20			84.9%
MAXIMUM	96%	JAN 7, 10			
MEAN	72.2%				74.9%
MINIMUM	42%	JAN 28			
LEAST HUMID DAY(S)	57.4%	JAN 28			64.9%

<u>WIND</u>					
MAX SPEED & DIRECTION	21 KT, ENE	JAN 31, 01Z			
MAX GUST & DIRECTION	32 KT, SE'E	JAN 17, 11Z			
MEAN	8.3 KT				12.7 KT
PREVAILING SPEED & DIRECTION	11.0 KT E'N				
<u>PRESSURE</u>					
MAXIMUM	1020.7 MB	JAN 17			
MEAN	1016.0 MB				1016.2 MB
MINIMUM	1011.8 MB	JAN 3			
<p>Table 2: Summary for V. C. Bird International Airport, Coolidge – January 2010. (All Times in Coordinated Universal Time (UTC/Z)). ¹Measured at 12:00 UTC daily. Normal – 1971 to 2000; AVG – 1995 to 2008. Records: temperature and rainiest – 1971 to 2010; Rainfall total 1928 – 2010.</p>					

dale_destin@yahoo.com