

## **Weather Summary for V. C. Bird International Airport, Coolidge, Antigua February 2010**

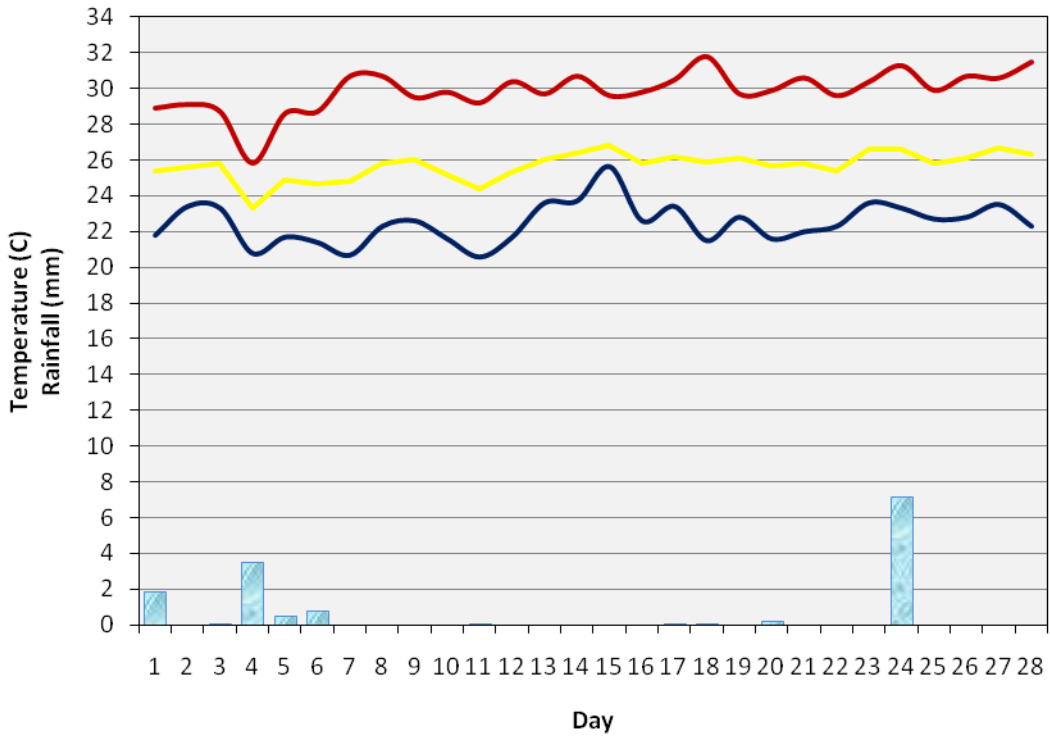
Dale C. S. Destin  
Antigua and Barbuda Meteorological Service  
March 31, 2010

Coolidge experienced well below normal rainfall during February. The total for the month was 0.57 inches as compared to the normal figure of 1.67 inches (1971 – 2000). The rainfall total for this month was a mere 34% of the normal total. There were only three rainy days, which was also well below normal. The maximum 1-day rainfall of 7.2 mm or 0.28 inches took place on February 4 as a result of a low level trough. Low level trough systems contributed most to the rainfall total for the month.

The mean temperature was well above normal, the highest since 1998 and the third highest for the record period – 1971 to 2010. The mean temperature was 25.7°C as compared to the normal of 25.1°C (1971 – 2000). The maximum temperature, 31.8°C, was well above normal and the highest for the record period. The second highest maximum for this month is 31°C recorded in 1981. Meanwhile, the minimum temperature, 20.6°C, was above normal.

The mean wind speed was well below normal and the lowest ever (1971 – 2010). The mean wind speed was 6.1 knots as compared to the normal of 12.5 knots. The next lowest wind speed for this month is 8.3 knots in 1998.

**Graph 1: February 2010 Met Elements at V. C. Bird Int'l Airport, Coolidge**



SUMMARY FOR V.C. BIRD INT'L AIRPORT, COOLIDGE – FEBRUARY 2010					
ELEMENT	OBSERVED VALUE	DATE	RECORD VALUE	YEAR	NORMAL   AVG
<u>TEMPERATURE</u>					
ABSOLUTE MAXIMUM	31.8°C	FEB 18	31.8°C	2010	29.4°C
MEAN DAILY MAXIMUM	29.9°C		29.9°C	2010	28.3°C
MEAN DAILY	25.7°C				25.1°C
MEAN DAILY MINIMUM	22.5°C		20.6°C	1972	22.0°C
ABSOLUTE MINIMUM	20.6°C	FEB 12	16.6°C	1983	19.1°C
WARMEST DAY(S)	26.8°C	FEB 15			26.2°C
COOLEST DAY(S)	23.3°C	FEB 4			24.1°C
DAYS MAX >= 31°C	3				
DAYS MIN <= 22°C	10				
MONTHLY RANGE	11.2°C		14.0	1983	10.1°C
<u>RAINFALL</u>					
TOTAL	14.5 MM		110.5 MM	1982	42.4 MM
RAINIEST DAY <sup>1</sup>	7.2 MM	FEB 24	39.0 MM	1982	12.7 MM
MEASURABLE RAINFALL DAYS	10				13.5
DAYS >= 1.0 MM	3				8.6 MM
DAYS >= 10.0 MM	0				1.0
DAYS >= 20.0 MM	0				0.2
<u>HUMIDITY</u>					
MOST HUMID DAY(S)	84.4%	FEB 4			83.9%
MAXIMUM	94%	FEB 25			
MEAN	74.8%				73.5%
MINIMUM	41%	FEB 7			
LEAST HUMID DAY(S)	68.7%	FEB 1			65.0%

<u>WIND</u>					
MAX SPEED & DIRECTION	23 KT, E'S	FEB 2, 17:15Z			
MAX GUST & DIRECTION	31 KT, E'S	FEB 2, 17:10Z			
MEAN	6.1 KT				12.5 KT
PREVAILING SPEED & DIRECTION	CALM				
<u>PRESSURE</u>					
MAXIMUM	1018.4 MB	FEB 1			
MEAN	1013.9 MB				1017.0 MB
MINIMUM	1009.2 MB	FEB 23			
<p>Table 1: Summary for V. C. Bird International Airport, Coolidge – February 2010. (All Times in Coordinated Universal Time (UTC/Z)). <sup>1</sup>Measured at 12:00 UTC daily. Normal – 1971 to 2000; AVG – 1995 to 2008. Records: temperature and rainiest day – 1971 to 2010; Rainfall total 1928 – 2009.</p>					

[dale\\_destin@yahoo.com](mailto:dale_destin@yahoo.com)